

P.S.F. TABLE

DOOR SIZE	DESIGN PRESSURE	TEST PRESSURE			
WIDTH	HEIGHT	POSITIVE	NEGATIVE	POSITIVE	NEGATIVE
9'-0"	7'-0"	+22.9	-26.4	+34.4	-39.6

DOORS SHOWN ON THIS DRAWING HAVE BEEN DEMONSTRATED TO WITHSTAND THE PRESSURES LISTED IN THE TABLE ABOVE VIA TESTING TO ANSI/DASMA 108-05.
 DETERMINATION OF SUITABILITY FOR SPECIFIC SITES IS THE RESPONSIBILITY OF OTHERS.

John E Scates PE
 3121 FAIRGATE DR.
 Carrollton, TX 75007
 TX-PE 56308-F-2203
 FL-PE-51737
 (972) 492-9500
 Professional Engineer's seal provided only for verification of Windload construction details.

REV.	E.C.N.	DATE:	APPROV.
B		12/15/11	RLB
A		2866 3/10/08	RLB
		2851 11/1/07	RLB

W WINDSOR DOOR
 P.O. BOX 8915
 LITTLE ROCK, AR
 72219-8915
 (501) 562-1872

MODELS: 790

PART NAME: WINDLOAD RESIDENTIAL SANDWICH DOOR

TOLERANCE: W2 B

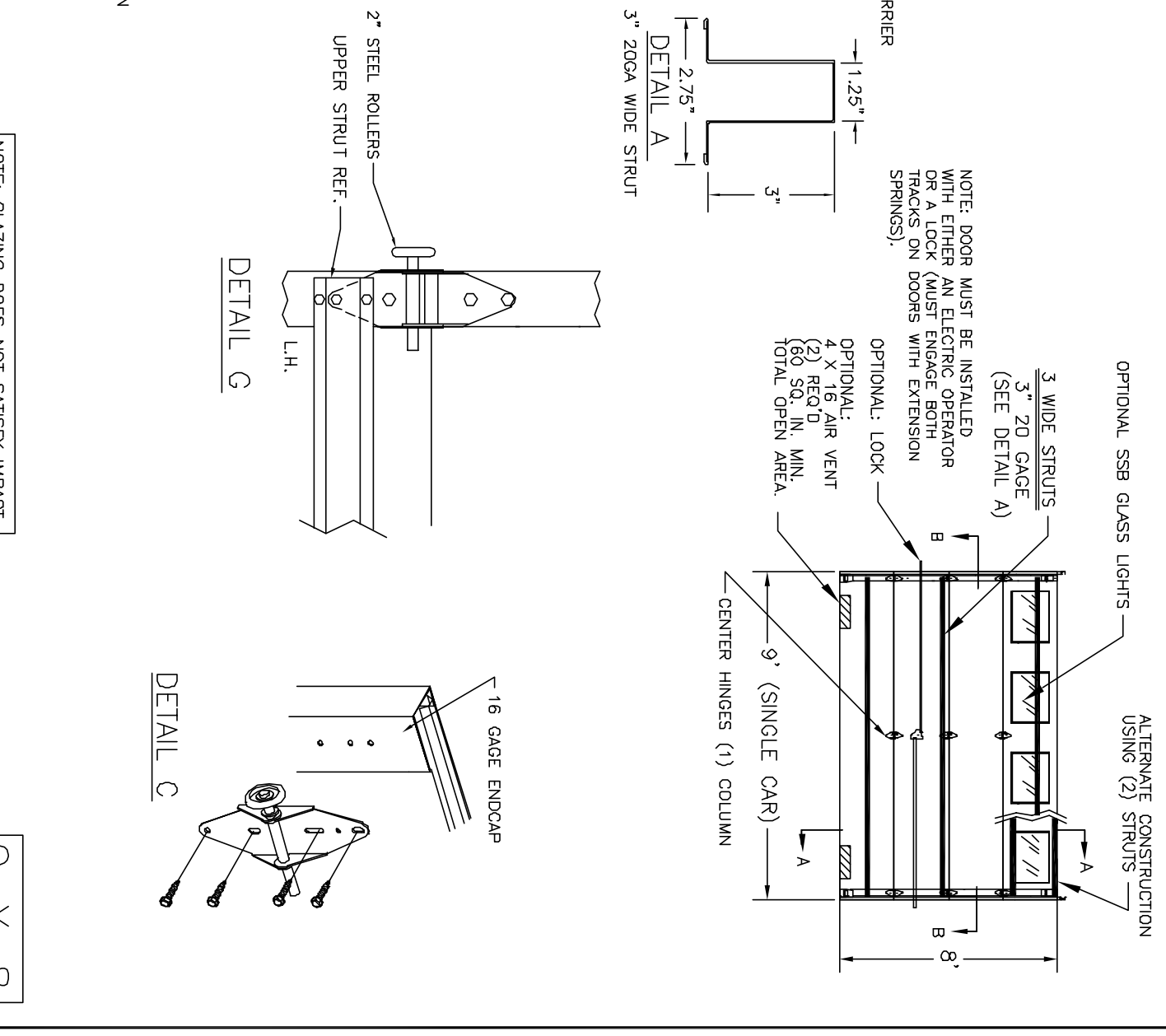
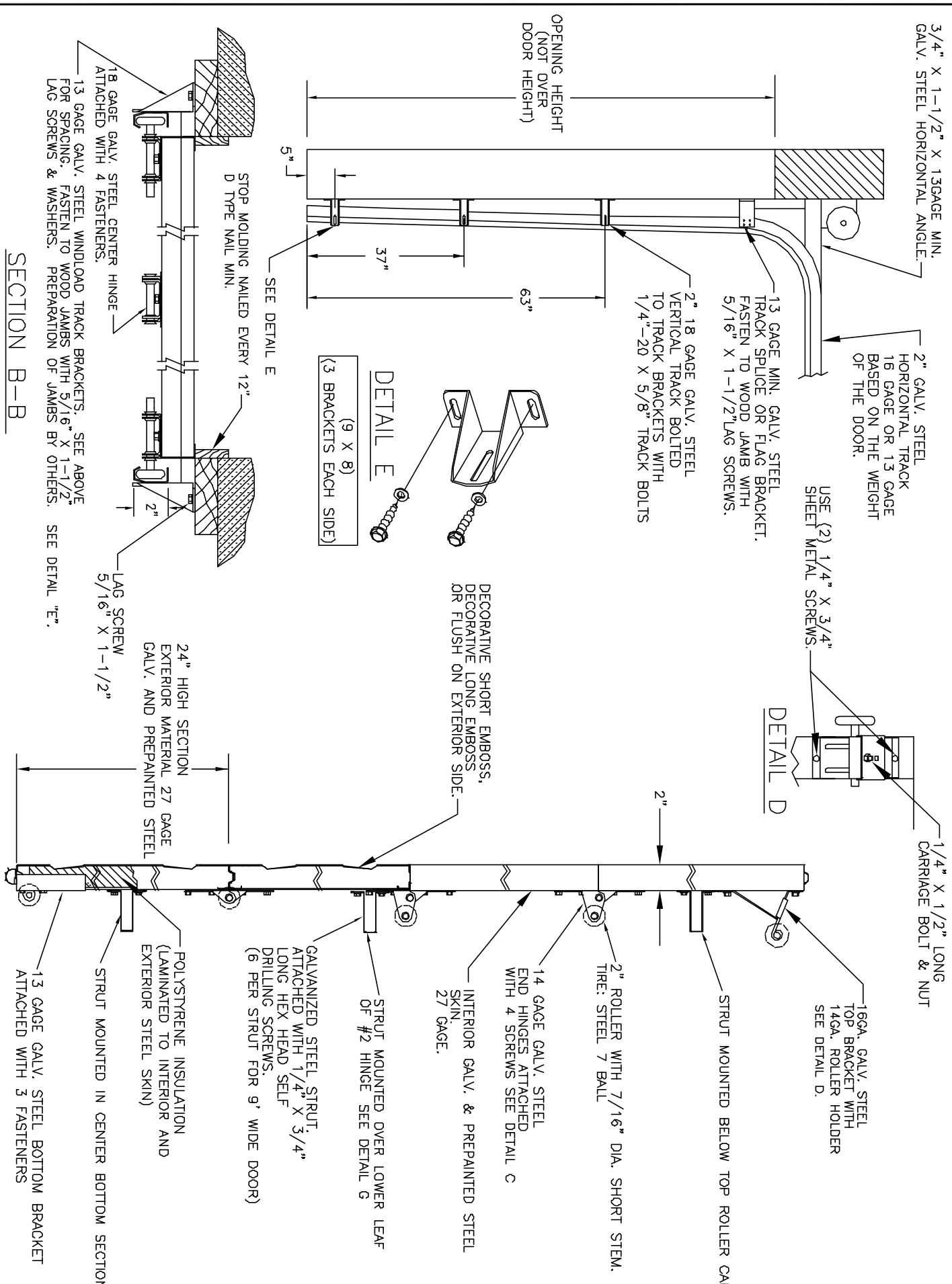
SCALE: 1/4" = 1'-0"

DATE: 10/11/07

DRN. BY: BH

DWG. NO. 99-B-086

SHT 1 OF 4



P.S.F. TABLE

DOOR SIZE	DESIGN PRESSURE	TEST PRESSURE
WIDTH	POSITIVE	NEGATIVE
HEIGHT	POSITIVE	NEGATIVE
9'-0"	8'-0"	+27.0
		-30.4
		+40.5
		-45.6

NOTE: ALL NON-DESCRIPTIVE FASTENERS SHOWN TO BE 1/4" - 20 X 5/8" HEX BOLTS & NUTS OR 1/4" X 3/4" LONG HEX HEAD SHEET METAL SCREWS.

DOORS SHOWN ON THIS DRAWING HAVE BEEN DEMONSTRATED TO WITHSTAND THE PRESSURES LISTED IN THE TABLE ABOVE VIA TESTING TO ANSI/DASMA 108-05.

DETERMINATION OF SUITABILITY FOR SPECIFIC SITES IS THE RESPONSIBILITY OF OTHERS.

John E. Scates PE
3121 FAIRGATE DR.
Corrilton, TX 75007
TX-PE 56308-F-2203
FL-PE-51737
(972) 492-9500

Professional Engineer's seal provided only for verification of windload construction details.

REV.	E.C.N.	DATE:	APPROV.
B		12/15/11	RLB
A	2866	3/10/08	RLB
	2851	11/1/07	RLB

NOTE: GLAZING DOES NOT SATISFY IMPACT DEBRIS REQUIREMENTS IN FBC

FL 15078

9 X 8

WINDSOR DOOR

P.O. BOX 8915
LITTLE ROCK, AR
72219-8915
(501) 562-1872

MODELS: 790

PART NAME: WINDLOAD RESIDENTIAL SANDWICH DOOR

TOLERANCE: W2 B

FRAC. ± 1/64"
DEC. ± .015
ANG. ± 1°

SCALE: NONE

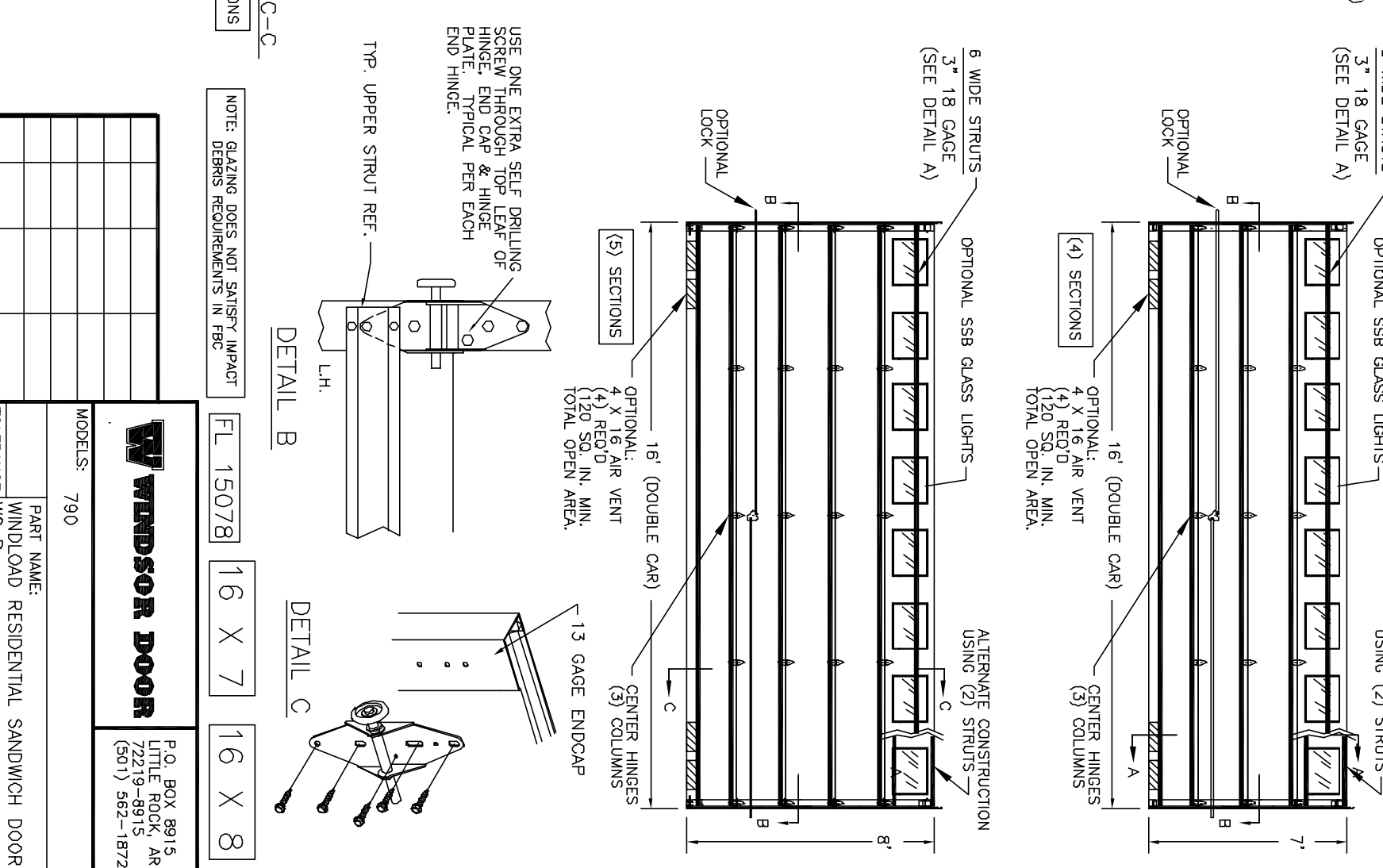
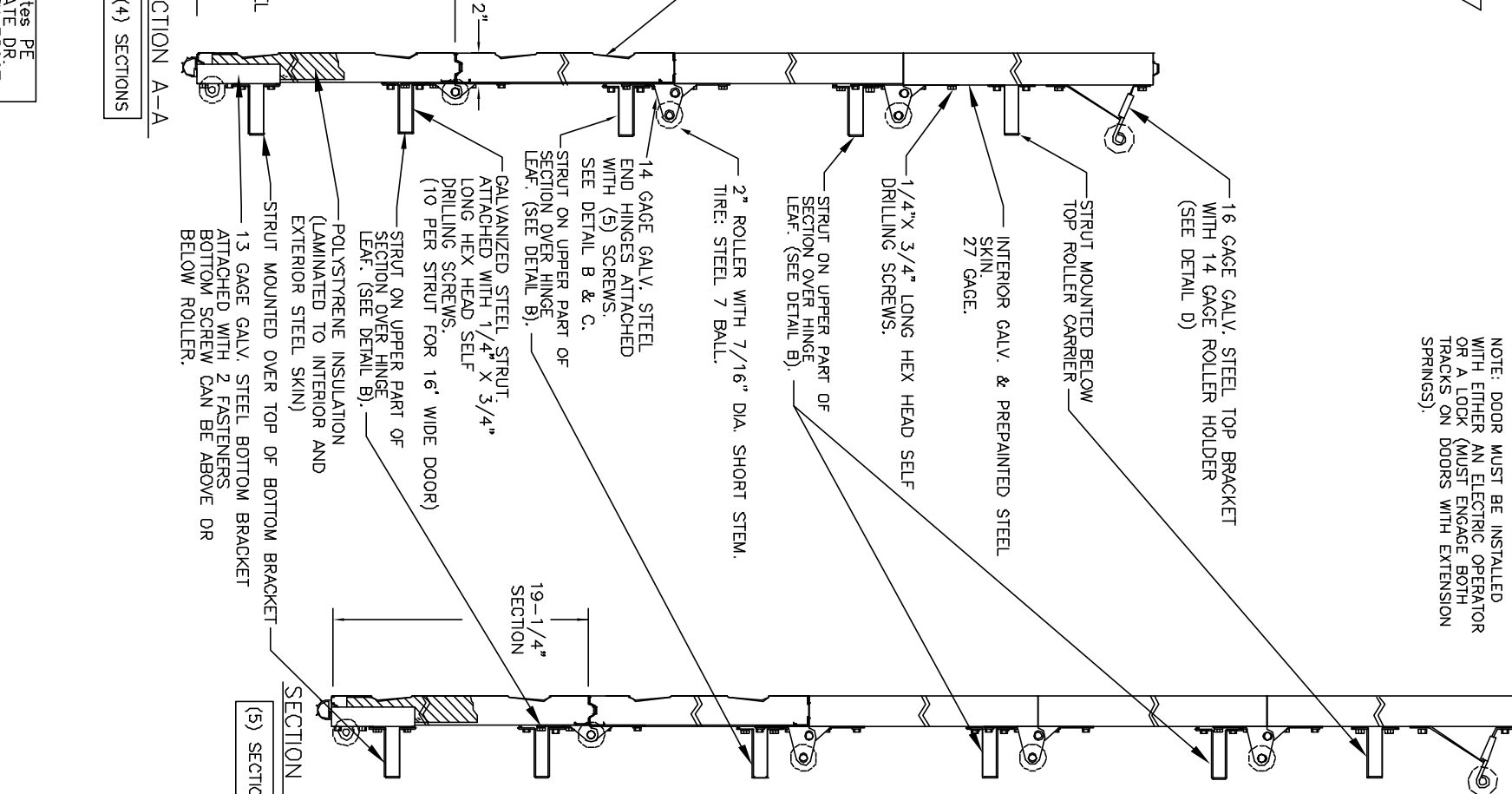
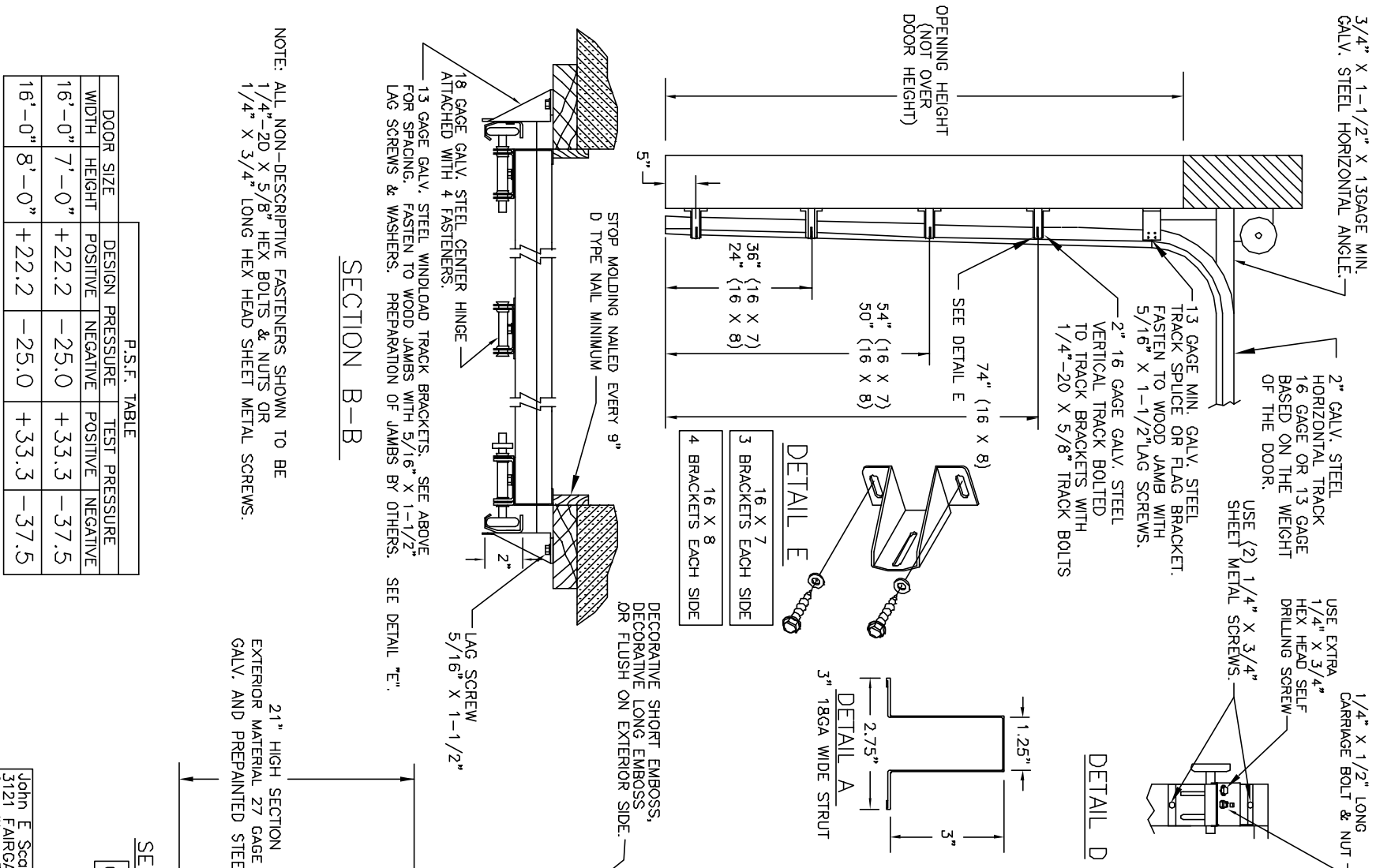
PLLOT SCALE: NEXT LEVEL

DATE: 11/1/07

DRN. BY: BH

DWG. NO.: 99-B-086

SHT 2 OF 4



P.S.F. TABLE

DOOR SIZE	DESIGN PRESSURE	TEST PRESSURE
WIDTH	POSITIVE	NEGATIVE
16'-0"	7'-0"	-25.0
16'-0"	8'-0"	+22.2
		-25.0
		+33.3
		-37.5

NOTE: ALL NON-DESCRIPTIVE FASTENERS SHOWN TO BE 1/4"-20 X 5/8" HEX BOLTS & NUTS OR 1/4" X 3/4" LONG HEX HEAD SHEET METAL SCREWS.

DOORS SHOWN ON THIS DRAWING HAVE BEEN DEMONSTRATED TO WITHSTAND THE PRESSURES LISTED IN THE TABLE ABOVE VIA TESTING TO ANSI/DASMA 108-05.

DETERMINATION OF SUITABILITY FOR SPECIFIC SITES IS THE RESPONSIBILITY OF OTHERS.

John E. Scates PE
3121 FAIRGATE DR.
Corrillion, TX 75007
TX-PE 56308-F-2203
FL-PE 51737
(972) 492-9500

Professional Engineer's seal
Provided only for verification of
windload construction details.

REV.	E.C.N.	DATE:	APPROV.
A	2866	3/10/08	RLB
B		12/15/11	RLB
2851		11/1/07	RLB

NOTE: GLAZING DOES NOT SATISFY IMPACT DEBRIS REQUIREMENTS IN FBC

FL 15078

16 X 7

16 X 8

WINDSOR DOOR

P.O. BOX 8915
LITTLE ROCK, AR
72219-8915
(501) 562-1872

MODEL: 790

PART NAME: WINDLOAD RESIDENTIAL SANDWICH DOOR

TOLERANCE: W2 B

SCALE: 1/8" = 1'-0"

DATE: 10/11/07

DWG. NO.: 99-B-086

DRN. BY: BH

SHT 3 OF 4

3/4" X 1-1/2" X 13GAGE MIN. GALV. STEEL HORIZONTAL ANGLE.
 2" GALV. STEEL HORIZONTAL TRACK 16 GAGE OR 13 GAGE BASED ON THE WEIGHT OF THE DOOR.
 13 GAGE MIN. GALV. STEEL TRACK SPLICE OR FLAG BRACKET. FASTEN TO WOOD JAMB WITH 5/16" X 1-1/2" LAG SCREWS.
 2" 16 GAGE GALV. STEEL VERTICAL TRACK BOLTED TO TRACK BRACKETS WITH 1/4"-20 X 5/8" TRACK BOLTS.

1/4" X 3/4" SHEET METAL SCREWS
 EXTRA 1/4" X 3/4" HEX HEAD SELF DRILLING SCREW

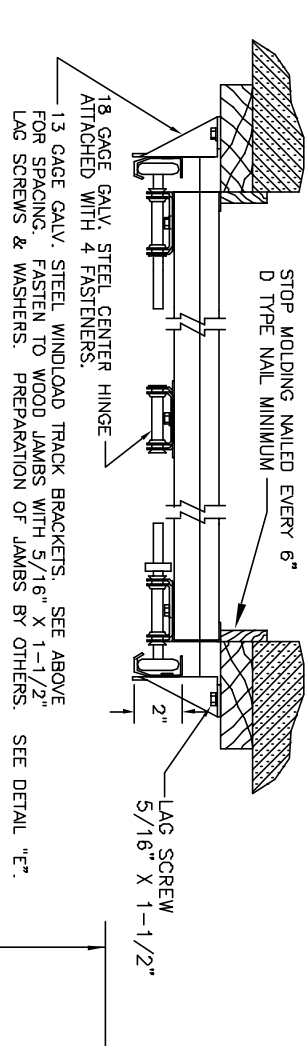
DETAIL D

SEE DETAIL E
 74" (18 X 8)

63" (18 X 7)
 54" (18 X 8)
 42" (18 X 7)
 39" (18 X 8)
 21" (18 X 7)
 24" (18 X 8)

DETAIL E
 18 X 7
 4 BRACKETS EACH SIDE
 18 X B
 5 BRACKETS EACH SIDE

DECORATIVE SHORT EMBOSS, DECORATIVE LONG EMBOSS OR FLUSH ON EXTERIOR SIDE.



SECTION B-B

NOTE: ALL NON-DESCRIPTIVE FASTENERS SHOWN TO BE 1/4"-20 X 5/8" HEX BOLTS & NUTS OR 1/4" X 3/4" LONG HEX HEAD SHEET METAL SCREWS.

NOTE: DOOR MUST BE INSTALLED WITH EITHER AN ELECTRIC OPERATOR OR A LOCK (MUST ENGAGE BOTH TRACKS ON DOORS WITH EXTENSION SPRINGS).

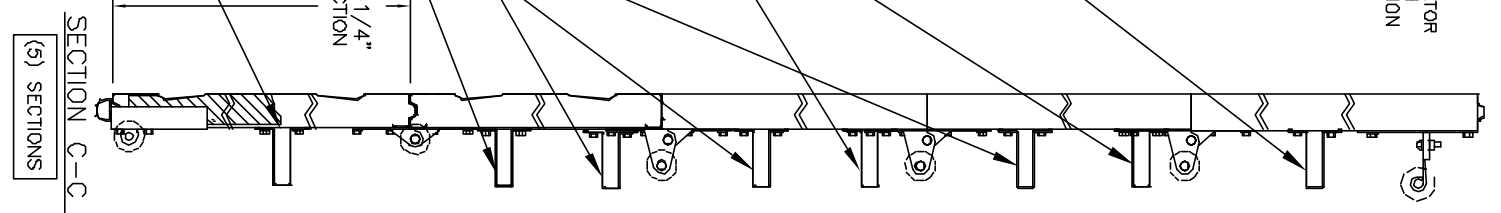
(3) 1/4" X 1/2" LONG CARRIAGE BOLT & NUT
 13 GAGE GALV. STEEL TOP BRACKET WITH 10 GAGE ROLLER HOLDER. NOTE THAT ROLLER HOLDER CURL IS TURNED DOWN. SEE DETAIL D.

STRUT MOUNTED CENTER OF SECTION
 INTERIOR GALV. & PREPAINTED STEEL SKIN, 27 GAGE.
 2" ROLLER WITH 7/16" DIA. LONG STEM, TIRE: STEEL 10 BALL.

STRUT ON UPPER PART OF SECTION OVER HINGE LEAF. (SEE DETAIL B).
 STRUT ON UPPER PART OF SECTION OVER HINGE LEAF. (SEE DETAIL B).
 14 GAGE GALV. STEEL END HINGES ATTACHED WITH 6 SCREWS. SEE DETAIL C.

STRUT MOUNTED ABOVE HINGE
 GALVANIZED STEEL STRUT, ATTACHED WITH 1/4" X 3/4" LONG HEX HEAD SELF DRILLING SCREWS. (10 PER STRUT FOR 18" WIDE DOOR)
 STRUT MOUNTED IN CENTER OF SECTION
 POLYSTYRENE INSULATION (LAMINATED TO INTERIOR AND EXTERIOR STEEL SKIN)
 13 GAGE GALV. STEEL BOTTOM BRACKET ATTACHED WITH 3 FASTENERS. BOTTOM SCREW CAN BE ABOVE OR BELOW ROLLER.

SECTION A-A
 (4) SECTIONS

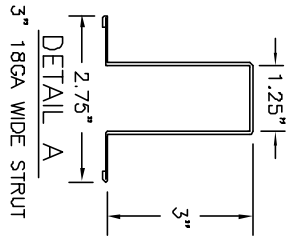


SECTION C-C
 (5) SECTIONS

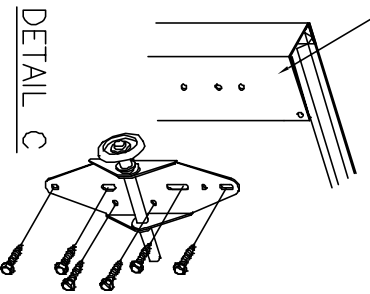
B WIDE STRUTS
 3" 18 GAGE (SEE DETAIL A)

OPTIONAL:
 4 X 16 AIR VENT (4) REQ'D (120 SQ. IN. MIN. TOTAL OPEN AREA).

8 WIDE STRUTS
 3" 18 GAGE (SEE DETAIL A)

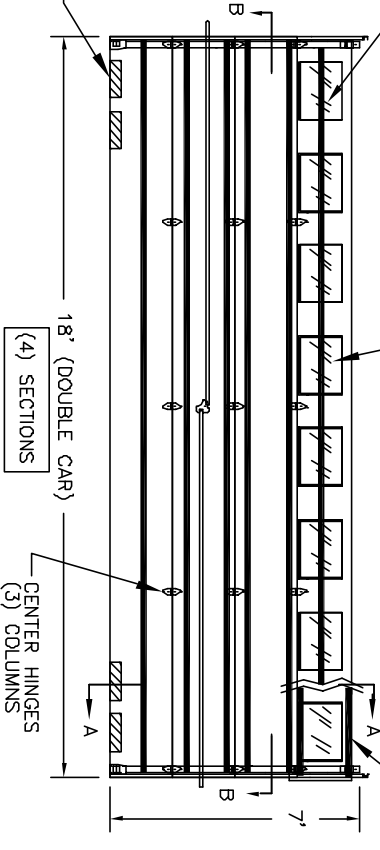


DETAIL A
 3" 18GA WIDE STRUT



DETAIL C

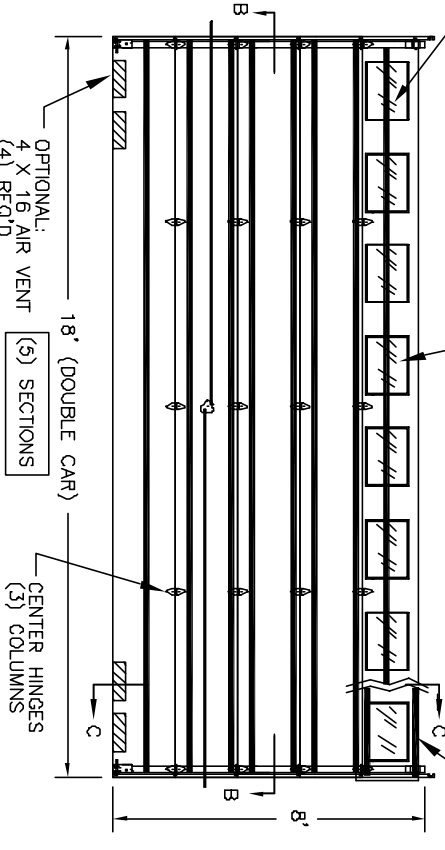
ALTERNATE CONSTRUCTION USING (2) STRUTS



(4) SECTIONS

CENTER HINGES (3) COLUMNS

ALTERNATE CONSTRUCTION USING (2) STRUTS



(5) SECTIONS

CENTER HINGES (3) COLUMNS

OPTIONAL:
 4 X 16 AIR VENT (4) REQ'D (120 SQ. IN. MIN. TOTAL OPEN AREA).

USE TWO EXTRA SELF DRILLING SCREWS THROUGH TOP AND BOTTOM LEAF OF HINGE. END CAP AND HINGE PLATE.

2" STEEL ROLLERS (LONG STEM)
 TYP. UPPER STRUT REF.

DETAIL B

18' X 7'
 18' X 8'

NOTE: GLAZING DOES NOT SATISFY IMPACT DEBRIS REQUIREMENTS IN FBC

DOOR SIZE	P.S.F. TABLE		TEST PRESSURE	
	DESIGN POSITIVE	DESIGN NEGATIVE	TEST POSITIVE	TEST NEGATIVE
18'-0" W x 7'-0" H	+22.2	-25.0	+33.3	-37.5
18'-0" W x 8'-0" H	+22.2	-25.0	+33.3	-37.5

DOORS SHOWN ON THIS DRAWING HAVE BEEN DEMONSTRATED TO WITHSTAND THE PRESSURES LISTED IN THE TABLE ABOVE VIA TESTING TO ANSI/DASMA 108-05.

DETERMINATION OF SUITABILITY FOR SPECIFIC SITES IS THE RESPONSIBILITY OF OTHERS.

John E. Scates PE
 3121 FAIRGATE DR.
 Carrollton, TX 75007
 TX-PE 56308-F-2203
 FL-PE 51737
 (972) 492-9500

Professional Engineer's seal provided only for verification of windload construction details.

REV.	E.C.N.	DATE	APPROV.	SCALE	PLOT SCALE	DRN. BY	SHT
A		12/15/11	RLB				
B		3/10/08	RLB				
		11/1/07	RLB				

WINDSOR DOOR
 P.O. BOX 8915
 LITTLE ROCK, AR
 72219-8915
 (501) 562-1872

MODEL: 790
 PART NAME: WINDLOAD RESIDENTIAL SANDWICH DOOR
 TOLERANCE: W2 B
 NEXT LEVEL: DATE: 11/1/07
 DWG. NO. 99-B-086
 SCALE: 1/4" = 1'-0"